

L12

L11

49.93
(0.00)
ENTRADA
PEDONAL

50.00
(0.02)

50.33
(0.95)

50.95
(0.37)

25.90m²

15.50m²

15.20m²

10.40m²

3.10m²

4.50m²

6.50m²

5.00m²

5.00m²

3.20m²

9.60m²

35.20m²

52.40m²

1.3

1.2

1.5

5.5

1.5

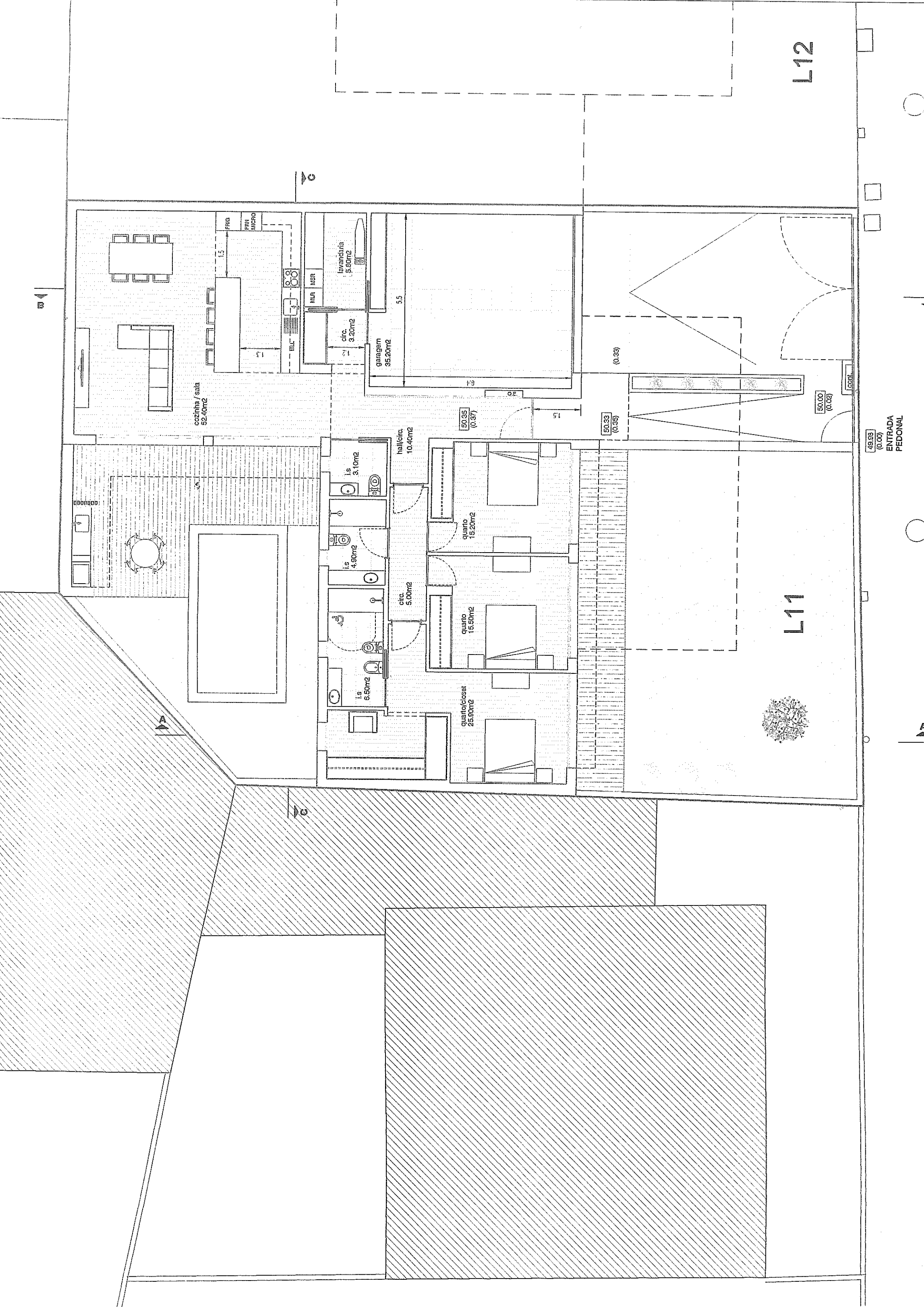
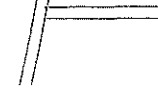
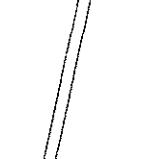
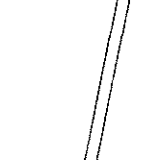
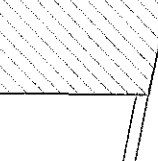
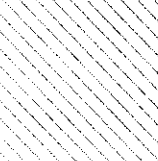
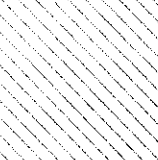
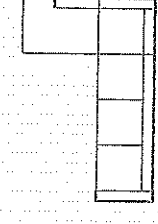
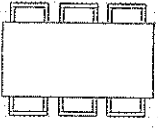
1.5

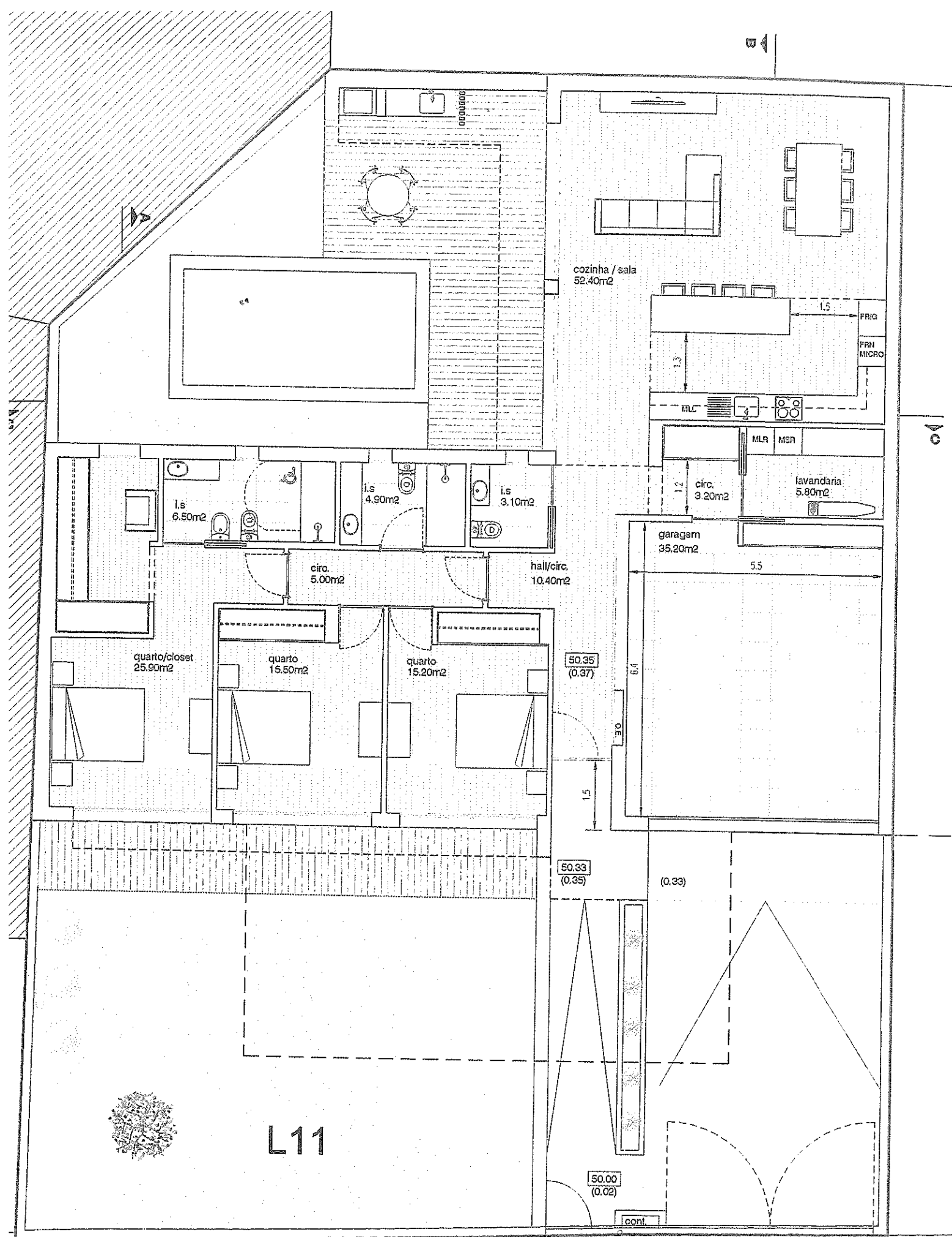
1.5

1.5

1.5

1.5





49.98
(0.00)
ENTRADA
PEDONAL